

Title

Optimisation of liver and intestine in vitro models for pharmacokinetics and pharmacodynamics studies.

LINTOP

(Liver, INTestine OPtimisation)

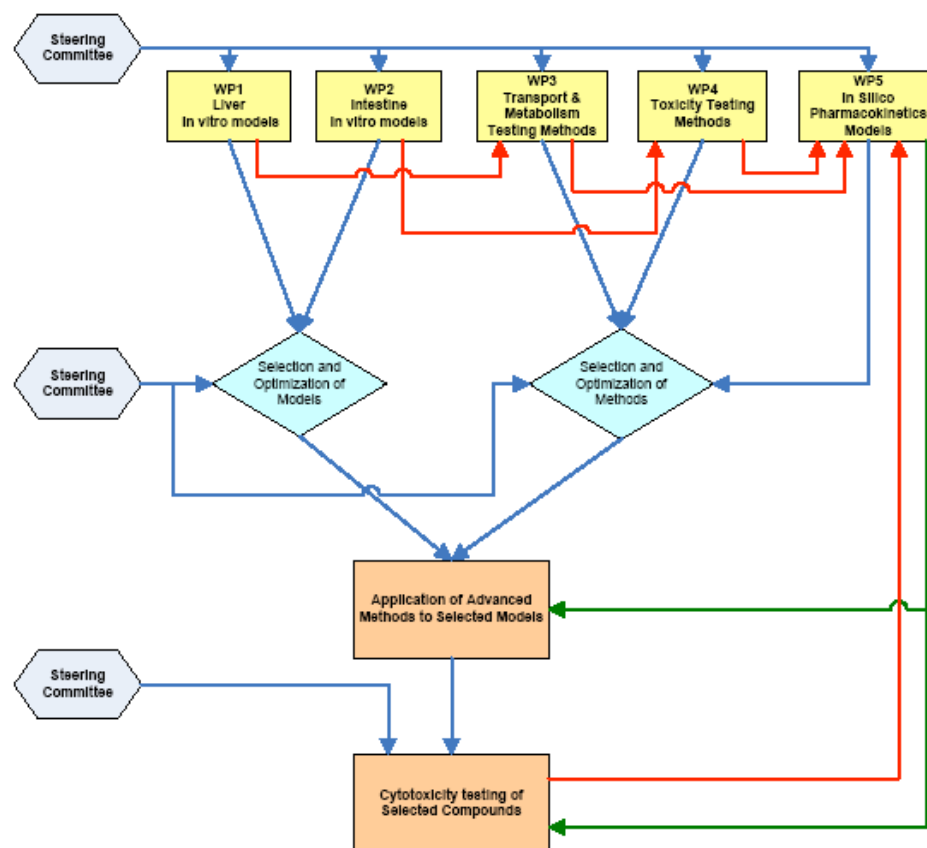
Objectives

- The main aim of this project is to optimise and provide established protocols and experimental in vitro models for testing intestinal and liver absorption, metabolism and toxicity of molecules of pharmacological interest.

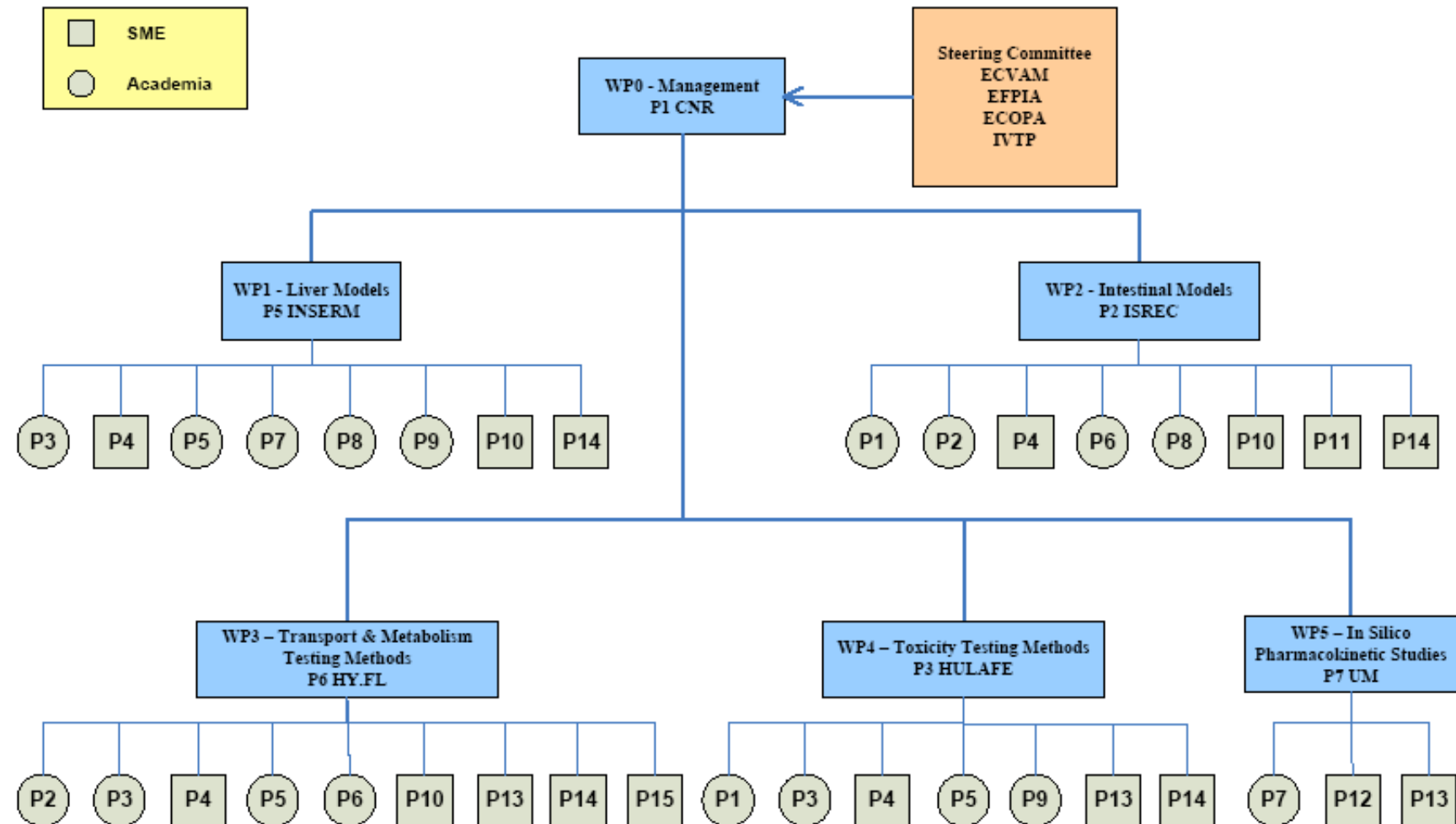
To achieve the proposed goals the following methodologies will be employed:

- hepatocytes and enterocytes in vitro cultures
- genomic and proteomic methods
- biotransformation and metabolic assays in the two cell types
- transport measurements in intestinal cell lines (passive and active)
- analytical techniques by LC-MS and MS-MS
- mechanism-based pharmacokinetic modelling
- statistical data handling

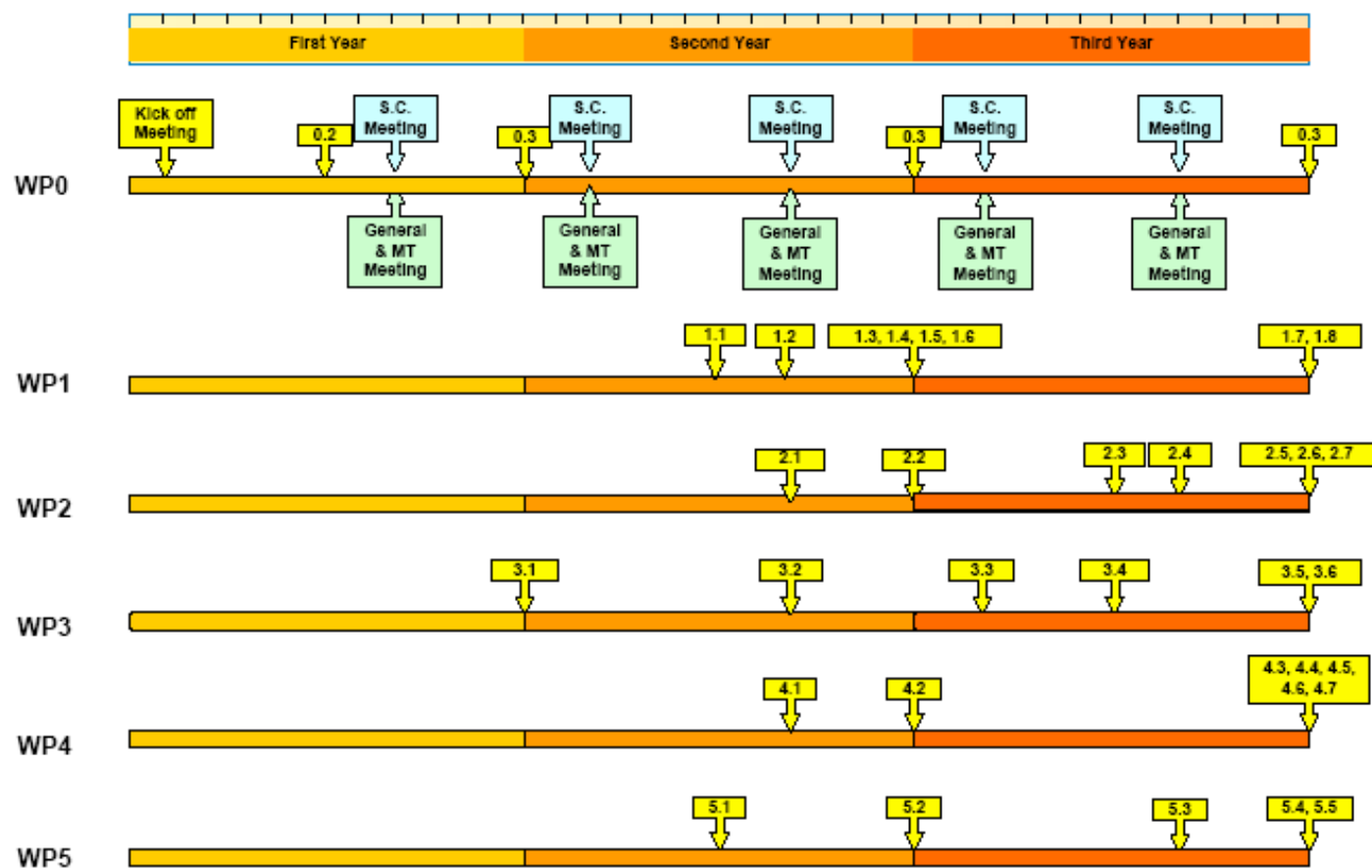
LINTOP Project Flow Diagram



LINTOP - Organization



LINTOP GANTT Chart



Notes: yellow banners indicate the timing of the milestones in each WP.
S.C. = Steering Committee; M.T.= Management Team

Participants

- 10 countries
 - 8 academic and research institutions
 - 7 SMEs
-
- 2 out of 5 WP coordinators are women and 6 out of 15 scientific team leaders are women.
 - 62 experienced researchers and staff out of a total of 100 participants are women.